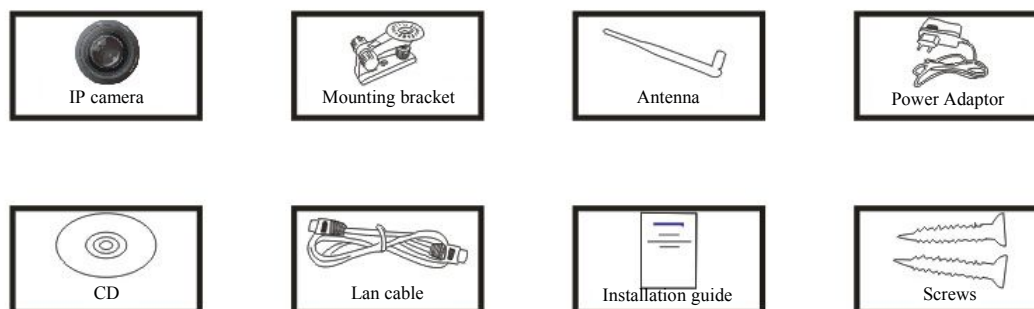



Wanscam

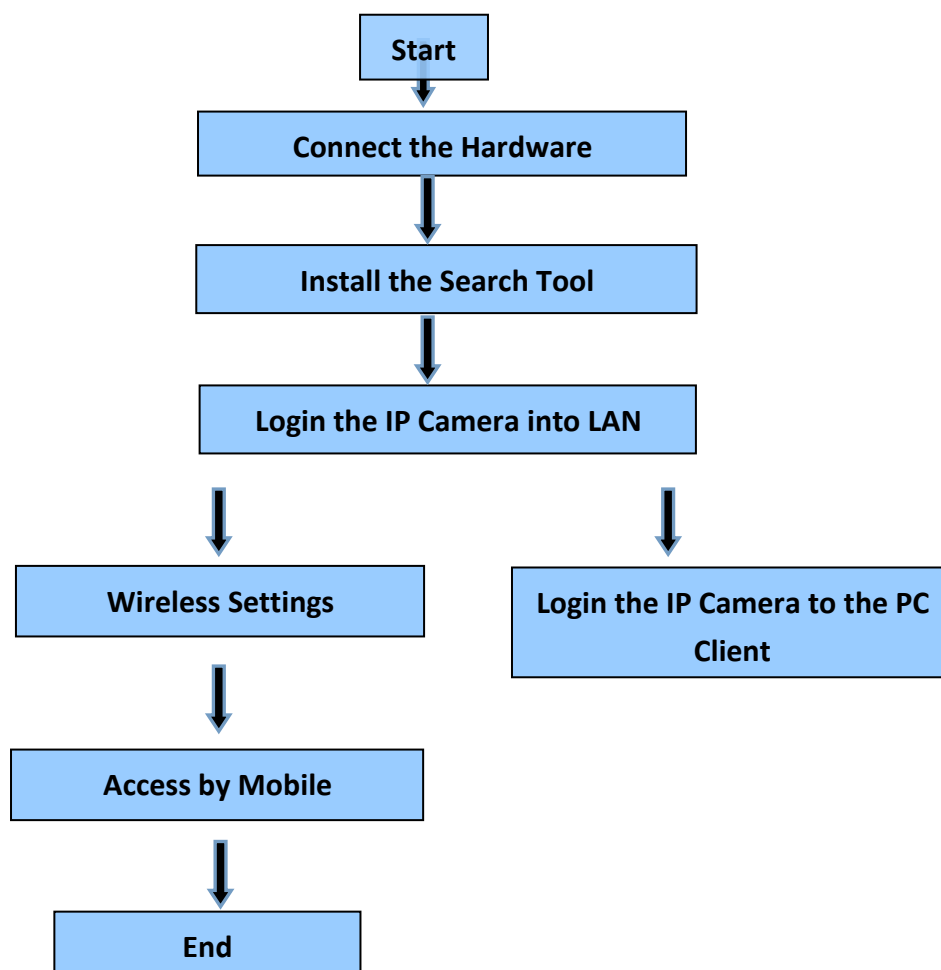
HW series IP Camera PC Web User Manual

Packing list:

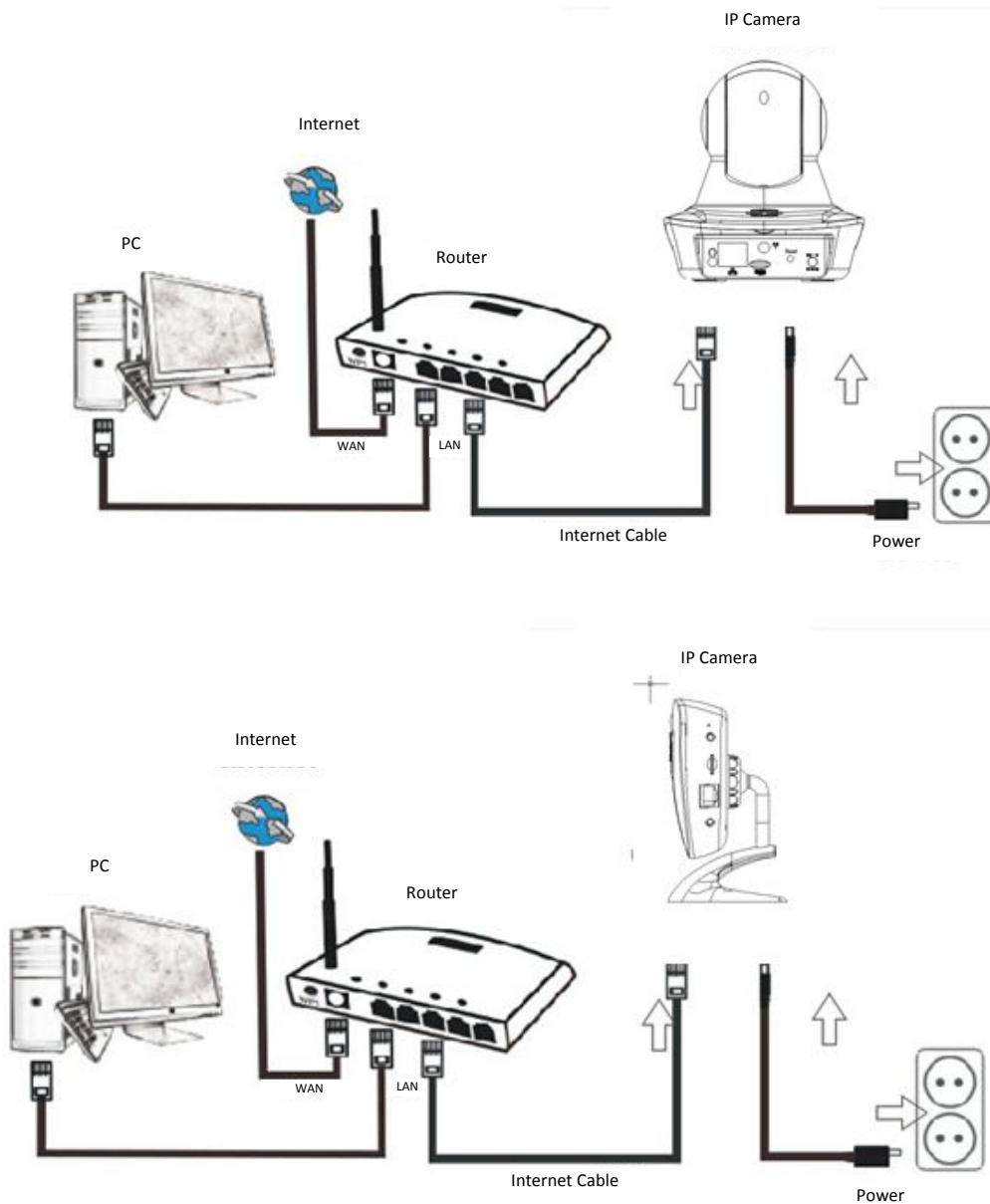


 **Note:** Some models don't have a separate antenna.

Installation procedure:

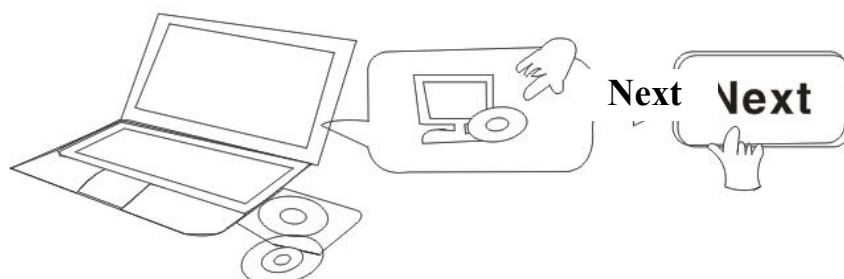


 **Note:** For the first time use of IP Camera, please refer to the procedures above.



Connect the camera with Internet cable to the router, and with the power cord to the mains, like shown above.

1. Installation of the Search Tool

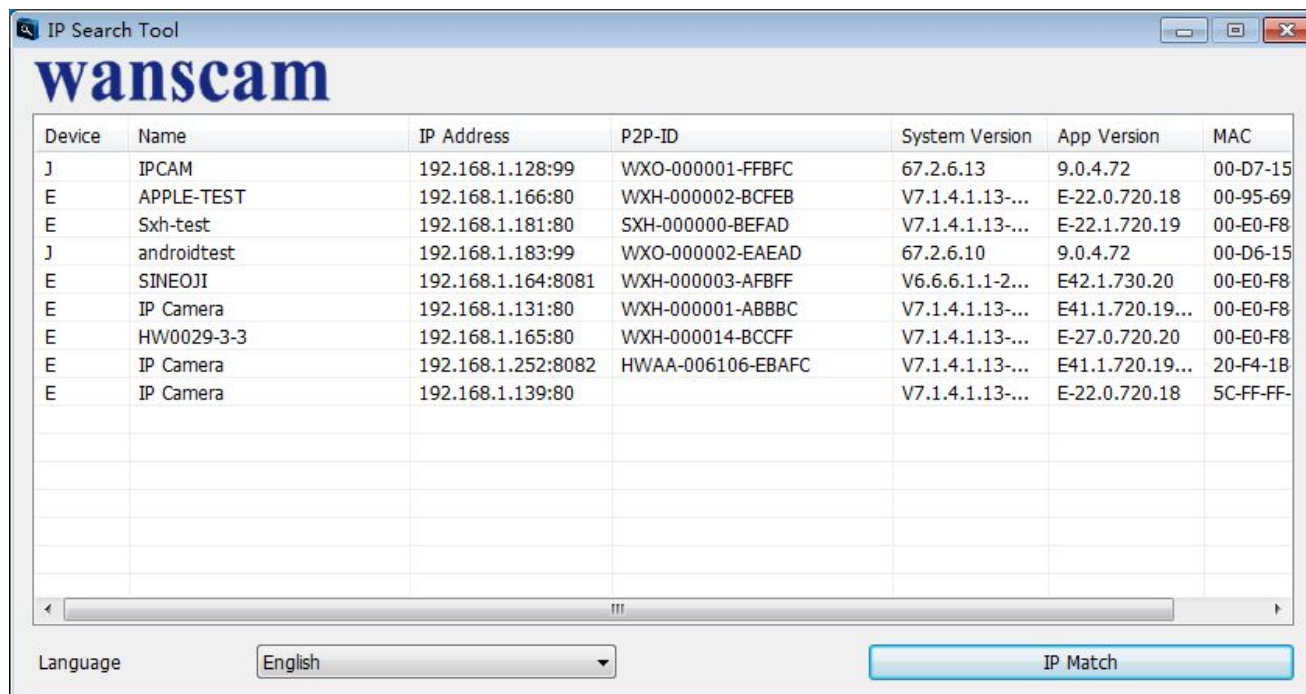


Insert the CD and install the following software:

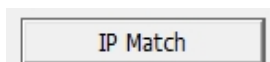
1. Open the File "Browser view" Open "HW", click on "OCX setup" — "Next" — "Install" — "Finish"
2. Open the File "Search Tool", Copy the "Search Tool" to the desktop and launch it.

2. Login of the IP Camera into the LAN

After the hardware is connected properly, launch the search tool, and the IP address of the camera will be displayed automatically.




 Note: If the Search Tool issues the message "**Subnet mask does not match**", please click



Double click the camera IP address in the search tool.

In your default browser a login screen like shown below will be displayed:




 **Note:** Both the username and password are “admin”


(Please change the account user name and password for safety later)

After entering the correct user name and password, the **Login** screen will be displayed.

(It supports 6 visitors watching online at the same time)



 **Note:** If the OCX already has been installed you may login directly. If not, please install OCX.


A. Click on  to download and Install it.


B. Refresh the webpage and login again, the camera video will be displayed as below

Live video



3. Wireless Setting

1. Click on the  button to access the “Wireless settings” .
2. Search for the WIFI signals and choose the desired SSID.
3. Make sure that all parameters are the same like in your router, enter the WIFI network key.
4. Click on “Check”, after 30 seconds, the notification will show you if the WIFI settings are successful.
5. If correct, just go back to select “Apply”, then disconnect the network cable.

 **Note:** If the camera IP Address can not be found by the search tool, please connect the internet cable again to check the WIFI settings.

Wireless	
Enable Wireless	<input checked="" type="radio"/> On <input type="radio"/> Off
SSID	<input type="text" value="wanscam_241"/> <input type="button" value="search"/>
Security mode	WPA2-PSK ▼
WPA Algorithm	AES ▼
Key	<input type="password" value="••••••••"/>
Re-type key	<input type="password" value="••••••••"/>
<div style="text-align: center;"> <input type="button" value="Apply"/> <input type="button" value="Cancel"/> </div>	

[Device information](#)
[Time set](#)
[Video settings](#)
[Audio Settings](#)
[Record Settings](#)
[Alarm Service Settings](#)
[Email](#)
[FTP](#)
[System Log](#)
[Network Settings](#)
[Wireless](#)
[DDNS Settings](#)
[PTZ set](#)
[Multiple settings](#)
[User Settings](#)
[Maintain](#)
[ONVIF](#)
[Motion detection](#)
[Auto Snap](#)
[Video mask](#)
[Image](#)
[Back](#)


Checking the WIFI signal connection status

Checking WiFi, please wait about 30 seconds.

Connected to WiFi successfully.
Select "Apply" to save these settings.

4. Device information Setting




- 1) Click on the  icon to access the "Device information" settings
- 2) You will see all information for the IP camera

Device information		Device information
Device ID:	IP Camera	Time set
P2P ID :	HWAA-006106-EBAFC	Video settings
Network Connection Status:	WiFi	Audio Settings
Current Visitors:	0	Record Settings
Software Version:	V7.1.4.1.13-20151104	Alarm Service Settings
Webware Version:	E41.1.720.19[IPC-1030]	Email
Mac address:	20:F4:1B:1F:CB:24	FTP
IP address:	192.168.1.252	System Log
Subnet mask:	255.255.255.0	Network Settings
Gateway:	192.168.1.1	Wireless
Primary DNS:	202.96.134.33	DDNS Settings
Manufacture's DDNS status:	Failed	PTZ set
Third Party DDNS status:	Dyndns Failed http://mydomain.dyndns.org	Multiple settings
System Start Time:	1970-01-01 08:00:22	User Settings
SD Card status:	No SD card	Maintain
	Browse SD Card.. Format SD Card as fat32 Stop SD Card	ONVIF
		Motion detection
		Auto Snap
		Video mask
		Image
		Back

5. Time Settings



- 1) Click on the  icon to access the “Time set”
- 2) You may choose any NTP server, then click on “Apply”
- 3) Choose the desired time and click on “Apply” to activate it

Time Settings		Device information
Device Date Time	2015-11-14 15:57:07	Time set
		Video settings
		Audio Settings
		Record Settings
		Alarm Service Settings
		Email
		FTP
		System Log
		Network Settings
		Wireless
		DDNS Settings
		PTZ set
		Multiple settings
		User Settings
		Maintain
		ONVIF
		Motion detection
		Auto Snap
		Video mask
		Image
		Back

		Device information
		Time set
		Video settings
		Audio Settings
		Record Settings
		Alarm Service Settings
		Email
		FTP
		System Log
		Network Settings
		Wireless
		DDNS Settings
		PTZ set
		Multiple settings
		User Settings
		Maintain
		ONVIF
		Motion detection
		Auto Snap
		Video mask
		Image
		Back

		Device information
		Time set
		Video settings
		Audio Settings
		Record Settings
		Alarm Service Settings
		Email
		FTP
		System Log
		Network Settings
		Wireless
		DDNS Settings
		PTZ set
		Multiple settings
		User Settings
		Maintain
		ONVIF
		Motion detection
		Auto Snap
		Video mask
		Image
		Back

		Device information
		Time set
		Video settings
		Audio Settings
		Record Settings
		Alarm Service Settings
		Email
		FTP
		System Log
		Network Settings
		Wireless
		DDNS Settings
		PTZ set
		Multiple settings
		User Settings
		Maintain
		ONVIF
		Motion detection
		Auto Snap
		Video mask
		Image
		Back

		Device information
		Time set
		Video settings
		Audio Settings
		Record Settings
		Alarm Service Settings
		Email
		FTP
		System Log
		Network Settings
		Wireless
		DDNS Settings
		PTZ set
		Multiple settings
		User Settings
		Maintain
		ONVIF
		Motion detection
		Auto Snap
		Video mask
		Image
		Back

		Device information
		Time set
		Video settings
		Audio Settings
		Record Settings
		Alarm Service Settings
		Email
		FTP
		System Log
		Network Settings
		Wireless
		DDNS Settings
		PTZ set
		Multiple settings
		User Settings
		Maintain
		ONVIF
		Motion detection
		Auto Snap
		Video mask
		Image
		Back

		Device information
		Time set
		Video settings
		Audio Settings
		Record Settings
		Alarm Service Settings
		Email
		FTP
		System Log
		Network Settings
		Wireless
		DDNS Settings
		PTZ set
		Multiple settings
		User Settings
		Maintain
		ONVIF
		Motion detection
		Auto Snap
		Video mask
		Image
		Back

		Device information
		Time set
		Video settings
		Audio Settings
		Record Settings
		Alarm Service Settings
		Email
		FTP
		System Log
		Network Settings
		Wireless
		DDNS Settings
		PTZ set
		Multiple settings
		User Settings
		Maintain
		ONVIF
		Motion detection
		Auto Snap
		Video mask
		Image
		Back

		Device information
		Time set
		Video settings
		Audio Settings
		Record Settings
		Alarm Service Settings
		Email
		FTP
		System Log
		Network Settings
		Wireless
		DDNS Settings
		PTZ set
		Multiple settings
		User Settings
		Maintain
		ONVIF
		Motion detection
		Auto Snap
		Video mask
		Image
		Back

		Device information
		Time set
		Video settings
		Audio Settings
		Record Settings
		Alarm Service Settings
		Email
		FTP
		System Log
		Network Settings
		Wireless
		DDNS Settings
		PTZ set
		Multiple settings
		User Settings
		Maintain
		ONVIF
		Motion detection
		Auto Snap
		Video mask
		Image
		Back

		Device information
		Time set
		Video settings
		Audio Settings
		Record Settings
		Alarm Service Settings
		Email
		FTP
		System Log
		Network Settings
		Wireless
		DDNS Settings
		PTZ set
		Multiple settings
		User Settings
		Maintain
		ONVIF
		Motion detection
		Auto Snap
		Video mask
		Image
		Back


		Device information
		Time set
		Video settings
		Audio Settings
		Record Settings
		Alarm Service Settings
		Email
		FTP
		System Log
		Network Settings
		Wireless
		DDNS Settings
		PTZ set
		Multiple settings
		User Settings
		Maintain
		ONVIF
		Motion detection
		Auto Snap
		Video mask
		Image
		Back

		Device information
		Time set
		Video settings
		Audio Settings
		Record Settings
		Alarm Service Settings
		Email
		FTP
		System Log
		Network Settings
		Wireless
		DDNS Settings
		PTZ set
		Multiple settings
		User Settings
		Maintain
		ONVIF
		Motion detection
		Auto Snap
		Video mask
		Image
		Back

		Device information
		Time set</

6. Record settings



- 1) Click on the  icon to access the “Record settings”
- 2) Choose “on”
- 3) Choose between “First stream” or “Second stream”
- 4) Choose the time schedule for recording
- 5) Click on “Apply”

Record Settings																								
Whether to Record:		<input type="radio"/> On <input checked="" type="radio"/> Off																						
Stream:		Second stream ▼																						
	0	1	2	3	4	5	6	7	8	9	10	11	12	13	14	15	16	17	18	19	20	21	22	23
Sunday																								
Monday																								
Tuesday																								
Wednesday																								
Thursday																								
Friday																								
Saturday																								
<div>Apply Select List Clear List</div>																								

[Device information](#)
[Time set](#)
[Video settings](#)
[Audio Settings](#)
[Record Settings](#)
[Alarm Service Settings](#)
[Email](#)
[FTP](#)
[System Log](#)
[Network Settings](#)
[Wireless](#)
[DDNS Settings](#)
[PTZ set](#)
[Multiple settings](#)
[User Settings](#)
[Maintain](#)
[ONVIF](#)
[Motion detection](#)
[Auto Snap](#)
[Video mask](#)
[Image](#)
[Back](#)

7. Alarm Settings & Motion Detection Configuration

- 1) First, you should activate the “Motion detection” and choose the display detail that should be monitored (you may alter the detail as require).

IP Camera

Motion detection

2015-11-14 16:02:42

Window1	Window2	Window3	Window4
<input checked="" type="checkbox"/> Window1	<input checked="" type="checkbox"/> Window2	<input checked="" type="checkbox"/> Window3	<input checked="" type="checkbox"/> Window4
Sensitivity:	Sensitivity:	Sensitivity:	Sensitivity:
<div style="width: 20px; height: 10px; background: linear-gradient(to right, blue, red);"></div>	<div style="width: 20px; height: 10px; background: linear-gradient(to right, blue, red);"></div>	<div style="width: 20px; height: 10px; background: linear-gradient(to right, blue, red);"></div>	<div style="width: 20px; height: 10px; background: linear-gradient(to right, blue, red);"></div>
50	50	50	50

Apply

Device information

Time set

Video settings

Audio Settings

Record Settings

Alarm Service Settings

Email

FTP

System Log

Network Settings

Wireless

DDNS Settings

PTZ set

Multiple settings

User Settings

Maintain

ONVIF

Motion detection

Auto Snap

Video mask

Image

Back

- 2) You may choose the “Alarm trigger ringtone” and time schedule, then click on “Apply”, If the motion detect detects a motion in the configured display detail the alarm bell will ring (The model without audio function is not provided with this alarm ring tone notification)

Alarm

Linkage set

☒ E-mail Alarm and Send Picture
☐ Save Picture to the FTP Server
☐ Save Video to the FTP Server
☐ Relay out 5 sec
☐ Save Picture to the SD Card
☐ Save Video to the SD card
☐ The alarm triggering siren
☐ Alarm preset 1

Image capture number 1

schedule Select List Clear List

	0	1	2	3	4	5	6	7	8	9	10	11	12	13	14	15	16	17	18	19	20	21	22	23
Sunday																								
Monday																								
Tuesday																								
Wednesday																								
Thursday																								
Friday																								
Saturday																								

Apply

Cancel

Device information

Time set

Video settings

Audio Settings

Record Settings

Alarm Service Settings

Email

FTP

System Log

Network Settings

Wireless

DDNS Settings

PTZ set

Multiple settings

User Settings

Maintain

ONVIF

Motion detection

Auto Snap

Video mask

Image

Back

8. Alarm Notification Setting & Email, FTP

- 1) The email configuration screen serves for the preparation of the alarm function. If the motion detect activates your camera is triggered, you will receive an email containing photos. Precondition for this is the correct setup and test of the service. Here the configuration of a Gmail account as example:

Email Setting		
SMTP server:	<input type="text" value="smtp.gmail.com"/>	Server Port <input type="text" value="25"/>
Safe link	<input type="text" value="STARTTLS"/>	
Authentication	<input checked="" type="radio"/> On <input type="radio"/> Off	
User name	<input type="text" value="111111111@gmail.com"/>	
Password	<input type="password" value="....."/>	
Receiver	<input type="text" value="22222222@gmail.com"/>	
Sender	<input type="text" value="111111111@gmail.com"/>	
Subject	<input type="text" value="test"/>	
Message	<div><input type="text" value="ok"/></div> <div>(the max length is 127)</div>	
Test Email settings	<input type="button" value="Test"/>	Please set first, and then test.

- Device information
- Time set
- Video settings
- Audio Settings
- Record Settings
- Alarm Service Settings
- Email**
- FTP
- System Log
- Network Settings
- Wireless
- DDNS Settings
- PTZ set
- Multiple settings
- User Settings
- Maintain
- ONVIF
- Motion detection
- Auto Snap
- Video mask
- Image
- Back

Note: This function only works if the IP camera is connected to the network. If you use Gmail, you must configure the port as 465, SSL as TLS. But the most important is, that you check if your email client has SMTP enabled.

- 2) FTP service is a precondition for the alarm function. If the motion detect activates your camera an email with photos will be submitted to you. For this it is required that you configure the email service correctly in check it for functionality. For example:

FTP	
Server Address	192.168.1.254
Server Port	21
User name	admin
Password	••••••••
Passive mode	<input checked="" type="radio"/> On <input type="radio"/> Off
Storage Path	/
Test FTP settings	<input type="button" value="Test"/> Please set first, and then test.
<input type="button" value="Apply"/> <input type="button" value="Cancel"/>	

- Device information
- Time set
- Video settings
- Audio Settings
- Record Settings
- Alarm Service Settings
- Email
- FTP
- System Log
- Network Settings
- Wireless
- DDNS Settings
- PTZ set
- Multiple settings
- User Settings
- Maintain
- ONVIF
- Motion detection
- Auto Snap
- Video mask
- Image
- Back

3) Alarm Service Settings, please enter the same settings like in the screenshot below:

Alarm																																																																																																																																																																																																									
Linkage set	<input checked="" type="checkbox"/> E-mail Alarm and Send Picture																																																																																																																																																																																																								
	<input type="checkbox"/> Save Picture to the FTP Server																																																																																																																																																																																																								
	<input type="checkbox"/> Save Video to the FTP Server																																																																																																																																																																																																								
	<input type="checkbox"/> Relay out <input type="text" value="5 sec"/>																																																																																																																																																																																																								
	<input type="checkbox"/> Save Picture to the SD Card																																																																																																																																																																																																								
	<input type="checkbox"/> Save Video to the SD card																																																																																																																																																																																																								
	<input type="checkbox"/> The alarm triggering siren																																																																																																																																																																																																								
	<input type="checkbox"/> Alarm preset <input type="text" value="1"/>																																																																																																																																																																																																								
Image capture number	<input type="text" value="1"/>																																																																																																																																																																																																								
schedule	<input type="button" value="Select List"/> <input type="button" value="Clear List"/>																																																																																																																																																																																																								
	<table border="1"> <thead> <tr> <th></th> <th>0</th><th>1</th><th>2</th><th>3</th><th>4</th><th>5</th><th>6</th><th>7</th><th>8</th><th>9</th><th>10</th><th>11</th><th>12</th><th>13</th><th>14</th><th>15</th><th>16</th><th>17</th><th>18</th><th>19</th><th>20</th><th>21</th><th>22</th><th>23</th> </tr> </thead> <tbody> <tr><td>Sunday</td><td></td><td></td><td></td><td></td><td></td><td></td><td></td><td></td><td></td><td></td><td></td><td></td><td></td><td></td><td></td><td></td><td></td><td></td><td></td><td></td><td></td><td></td><td></td><td></td></tr> <tr><td>Monday</td><td></td><td></td><td></td><td></td><td></td><td></td><td></td><td></td><td></td><td></td><td></td><td></td><td></td><td></td><td></td><td></td><td></td><td></td><td></td><td></td><td></td><td></td><td></td><td></td></tr> <tr><td>Tuesday</td><td></td><td></td><td></td><td></td><td></td><td></td><td></td><td></td><td></td><td></td><td></td><td></td><td></td><td></td><td></td><td></td><td></td><td></td><td></td><td></td><td></td><td></td><td></td><td></td></tr> <tr><td>Wednesday</td><td></td><td></td><td></td><td></td><td></td><td></td><td></td><td></td><td></td><td></td><td></td><td></td><td></td><td></td><td></td><td></td><td></td><td></td><td></td><td></td><td></td><td></td><td></td><td></td></tr> <tr><td>Thursday</td><td></td><td></td><td></td><td></td><td></td><td></td><td></td><td></td><td></td><td></td><td></td><td></td><td></td><td></td><td></td><td></td><td></td><td></td><td></td><td></td><td></td><td></td><td></td><td></td></tr> <tr><td>Friday</td><td></td><td></td><td></td><td></td><td></td><td></td><td></td><td></td><td></td><td></td><td></td><td></td><td></td><td></td><td></td><td></td><td></td><td></td><td></td><td></td><td></td><td></td><td></td><td></td></tr> <tr><td>Saturday</td><td></td><td></td><td></td><td></td><td></td><td></td><td></td><td></td><td></td><td></td><td></td><td></td><td></td><td></td><td></td><td></td><td></td><td></td><td></td><td></td><td></td><td></td><td></td><td></td></tr> </tbody> </table>		0	1	2	3	4	5	6	7	8	9	10	11	12	13	14	15	16	17	18	19	20	21	22	23	Sunday																									Monday																									Tuesday																									Wednesday																									Thursday																									Friday																									Saturday																								
	0	1	2	3	4	5	6	7	8	9	10	11	12	13	14	15	16	17	18	19	20	21	22	23																																																																																																																																																																																	
Sunday																																																																																																																																																																																																									
Monday																																																																																																																																																																																																									
Tuesday																																																																																																																																																																																																									
Wednesday																																																																																																																																																																																																									
Thursday																																																																																																																																																																																																									
Friday																																																																																																																																																																																																									
Saturday																																																																																																																																																																																																									
<input type="button" value="Apply"/> <input type="button" value="Cancel"/>																																																																																																																																																																																																									

- Device information
- Time set
- Video settings
- Audio Settings
- Record Settings
- Alarm Service Settings
- Email
- FTP
- System Log
- Network Settings
- Wireless
- DDNS Settings
- PTZ set
- Multiple settings
- User Settings
- Maintain
- ONVIF
- Motion detection
- Auto Snap
- Video mask
- Image
- Back

9. System log & Net work setting

1). System log is intended for administrators to monitor the system operation

[2015_11_13 18:29:43] user (admin) login for live stream.
[2015_11_13 18:29:48] user (admin) logout from live stream.
[2015_11_13 18:30:01] user (admin) login for live stream.
[2015_11_13 18:30:04] user (admin) logout from live stream.
[2015_11_13 18:30:06] user (admin) login for live stream.
[2015_11_13 18:30:08] user (admin) logout from live stream.
[2015_11_13 18:30:16] user (admin) login for live stream.
[2015_11_13 18:30:18] user (admin) logout from live stream.
[2015_11_13 18:34:29] user (admin) login for live stream.
[2015_11_13 18:34:32] user (admin) logout from live stream.
[2015_11_13 18:34:32] user (admin) login for live stream.
[2015_11_13 18:34:34] user (admin) logout from live stream.
[2015_11_13 18:35:25] user (admin) login for live stream.
[2015_11_13 18:35:29] user (admin) logout from live stream.
[2015_11_13 18:35:33] user (admin) login for live stream.
[2015_11_13 18:35:34] user (admin) logout from live stream.
[2015_11_13 18:35:36] user (admin) login for live stream.
[2015_11_13 18:35:38] user (admin) logout from live stream.
[2015_11_13 18:35:39] user (admin) login for live stream.
[2015_11_13 18:35:40] user (admin) logout from live stream.
[2015_11_13 18:35:41] user (admin) login for live stream.
[2015_11_13 18:35:43] user (admin) logout from live stream.
[2015_11_13 18:37:00] user (admin) login for live stream.
[2015_11_13 18:37:02] user (admin) logout from live stream.
[2015_11_13 18:37:02] user (admin) login for live stream.
[2015_11_13 18:37:03] user (admin) logout from live stream.
[2015_11_13 18:38:43] user (admin) login for live stream.
[2015_11_13 18:38:44] user (admin) logout from live stream.
[2015_11_13 18:38:45] user (admin) login for live stream.
[2015_11_13 18:38:47] user (admin) logout from live stream.
[2015_11_13 18:38:48] user (admin) login for live stream.
[2015_11_13 18:38:50] user (admin) logout from live stream.
[2015_11_13 18:38:50] user (admin) login for live stream.
[2015_11_13 18:38:52] user (admin) logout from live stream.
[2015_11_13 18:40:09] user (admin) login for live stream.
[2015_11_13 18:40:35] user (admin) logout from live stream.

Clear Log Refresh

Device information

Time set

Video settings

Audio Settings

Record Settings

Alarm Service Settings

Email

FTP

System Log

Network Settings

Wireless

DDNS Settings

PTZ set

Multiple settings

User Settings

Maintain

ONVIF

Motion detection

Auto Snap

Video mask

Image

Back

2). In "Network Settings" you may modify the IP address, gateway and port number

LAN Settings

IP Configuration Type

Fixed IP Address

▼

IP address

192.168.1.252

Subnet mask

255.255.255.0

Gateway

192.168.1.1

DNS Configuration Type

Manual DNS

▼

Primary DNS

202.96.134.33

Secondary DNS

202.96.128.86

HTTP Port

8082

(80 or 1024~49151)

RTSP Port

554

(554 or 1024~49151)

Rtmp

1935

RTSP Permission verify

☒ On ☐ Off (Note:Modify the settings, reboot the device)

Apply

Cancel

Device information

Time set

Video settings

Audio Settings

Record Settings

Alarm Service Settings

Email

FTP

System Log

Network Settings

Wireless

DDNS Settings

PTZ set

Multiple settings

User Settings

Maintain

ONVIF

Motion detection


Auto Snap

Video mask

Image

Back

10. DDNS Setting

1) Click on the  icon and the choose "DDNS Service Settings".

- 2) Choose the DDNS server, enter the DDNS user name and password.
- 3) Submit, refresh, then the DDNS status will be shown as “DDNS Succeed”.

DDNS	
Main DDNS	<input checked="" type="radio"/> On <input type="radio"/> Off
Server Address	<input type="text" value="ipcpnp.com"/>
Server Port	<input type="text" value="80"/>
User name	<input type="text" value="ip1233"/>
Password	<input type="password" value="••••"/>
3th DDNS	<input checked="" type="radio"/> On <input type="radio"/> Off
Server Provider	<input type="text" value="Dyndns.org"/>
User name	<input type="text" value="myuserid"/>
Password	<input type="password" value="••••••••"/>
Your Domain	<input type="text" value="mydomain.dyndns.org"/>

[Device information](#)
[Time set](#)
[Video settings](#)
[Audio Settings](#)
[Record Settings](#)
[Alarm Service Settings](#)
[Email](#)
[FTP](#)
[System Log](#)
[Network Settings](#)
[Wireless](#)
[DDNS Settings](#)
[PTZ set](#)
[Multiple settings](#)
[User Settings](#)
[Maintain](#)
[ONVIF](#)
[Motion detection](#)
[Auto Snap](#)
[Video mask](#)
[Image](#)
[Back](#)

11. PTZ Setting & User Setting

- 1). Here you may configure some PTZ options

PTZ set	
Cruise laps	<input type="text" value="1"/> (1-50)
PTZ speed	<input type="text" value="Medium"/>
Centered after Self-check	<input type="radio"/> On <input checked="" type="radio"/> Off
Close the alarm while PTZ movement	<input checked="" type="radio"/> On <input type="radio"/> Off

[Device information](#)
[Time set](#)
[Video settings](#)
[Audio Settings](#)
[Record Settings](#)
[Alarm Service Settings](#)
[Email](#)
[FTP](#)
[System Log](#)
[Network Settings](#)
[Wireless](#)
[DDNS Settings](#)
[PTZ set](#)
[Multiple settings](#)
[User Settings](#)
[Maintain](#)
[ONVIF](#)
[Motion detection](#)
[Auto Snap](#)
[Video mask](#)
[Image](#)
[Back](#)

2). Modification of the user password

User Settings			
Preview	User name	Password	Re-type password
admin	<input type="text" value="admin"/>	<input type="password" value="....."/>	<input type="password" value="....."/>
user	<input type="text" value="user"/>	<input type="password" value="...."/>	<input type="password" value="...."/>
guest	<input type="text" value="guest"/>	<input type="password" value="....."/>	<input type="password" value="....."/>

[Device information](#)
[Time set](#)
[Video settings](#)
[Audio Settings](#)
[Record Settings](#)
[Alarm Service Settings](#)
[Email](#)
[FTP](#)
[System Log](#)
[Network Settings](#)
[Wireless](#)
[DDNS Settings](#)
[PTZ set](#)
[Multiple settings](#)
[User Settings](#)
[Maintain](#)
[ONVIF](#)
[Motion detection](#)
[Auto Snap](#)
[Video mask](#)
[Image](#)
[Back](#)

12. Multiple Settings

- 1) Refresh the device in the LAN search, then you will find other cameras connected to the same LAN
- 2) Click on the “2nd device”
- 3) Click on the desired the camera to add it as the 2nd device , enter the correct user name and password
- 4) Click on “Apply”
- 5) You may add up to 9 cameras to the multiple settings

Multiple settings	
Lan Search	<div>APPLE-TEST(192.168.1.166) IP Camera(192.168.1.131) IP Camera(192.168.1.130) Sxh-test(192.168.1.181) IP Camera(192.168.1.139) HW0029-3-3(192.168.1.165) SINEOJI(192.168.1.164) IP Camera(192.168.1.252)</div> <div><input type="button" value="Refresh"/></div>
The 1st device	Local Host
The 2nd device	None
The 3rd device	None
The 4th device	None
The 5th device	None
The 6th device	None
The 7th device	None
The 8th device	None
The 9th device	None

[Device information](#)
[Time set](#)
[Video settings](#)
[Audio Settings](#)
[Record Settings](#)
[Alarm Service Settings](#)
[Email](#)
[FTP](#)
[System Log](#)
[Network Settings](#)
[Wireless](#)
[DDNS Settings](#)
[PTZ set](#)
[Multiple settings](#)
[User Settings](#)
[Maintain](#)
[ONVIF](#)
[Motion detection](#)
[Auto Snap](#)
[Video mask](#)
[Image](#)
[Back](#)

13. Maintenance & ONVIF

1) With this option you may restore the camera to its factory settings, and perform firmware updates.

Initialize	
Reboot	<div>reboot</div>
Restore Factory Defaults	<div>factory default</div>
Upgrade	<div><div></div><div>浏览...</div><div>ok</div></div>

Device information

Time set

Video settings

Audio Settings

Record Settings

Alarm Service Settings

Email

FTP

System Log

Network Settings

Wireless

DDNS Settings

PTZ set

Multiple settings

User Settings

Maintain

ONVIF

Motion detection

Auto Snap

Video mask

Image

Back

2) ONVIF Support

ONVIF	
onvif:	<div><div><input checked="" type="radio"/> On <input type="radio"/> Off</div></div>
Server Port:	<div>8080</div>
Preview:	<div><div><input type="radio"/> Check type <input checked="" type="radio"/> No check</div></div>
Time zone Settings:	<div><div><input checked="" type="radio"/> Allow <input type="radio"/> Prohibit</div></div>
Image Parameters Settings:	<div><div><input type="radio"/> Allow <input checked="" type="radio"/> Prohibit</div></div>

Apply

Cancel

Device information

Time set

Video settings

Audio Settings

Record Settings

Alarm Service Settings

Email

FTP

System Log

Network Settings

Wireless

DDNS Settings

PTZ set

Multiple settings

User Settings

Maintain

ONVIF

Motion detection

Auto Snap

Video mask

Image

Back

14. Auto Snap & Video Mark

1) Capturing of images to the SD card and FTP upload

Auto Snap

SD card Snapshot interval:	60	sec
	<input type="checkbox"/> Save Picture to the SD Card	
FTP Snapshot interval:	60	sec
	<input type="checkbox"/> Save Picture to the FTP Server FTP	
<div><div>Apply</div><div>Cancel</div></div>		

Device information

Time set

Video settings

Audio Settings

Record Settings

Alarm Service Settings

Email

FTP

System Log

Network Settings

Wireless

DDNS Settings

PTZ set

Multiple settings

User Settings

Maintain

ONVIF

Motion detection

Auto Snap

Video mask

Image

Back

2) Select the screen detail (you can change the size of the window), click on "Apply" and an obscured screen area appears

Video mask

IP Camera

2015-11-14 16:03:37

深圳市兴华安科技有限公司

Shenzhen Wanscam Technology Co.,Ltd

Window1

Window2

Window3

Window4

Color: 000000

Color: 000000

Color: 000000

Color: 000000

Apply

Device information

Time set

Video settings

Audio Settings

Record Settings

Alarm Service Settings

Email

FTP

System Log

Network Settings

Wireless

DDNS Settings

PTZ set

Multiple settings

User Settings

Maintain

ONVIF

Motion detection

Auto Snap

Video mask

Image

Back

15. Image setting

- 1) Click on apply to modify the brightness, saturation, sharpness, exposure, contrast
- 2) Click on the application to modify the exposure mode, infrared lamp,
- 3) Click on applications to change the value of the IR-cut
- 4) If you click on "Default" all image settings will restored to the default value

Image settings		
Mode: ColorMode		
Brightness:	<input type="range"/>	50
Saturation:	<input type="range"/>	120
Contrast:	<input type="range"/>	50
Sharpness:	<input type="range"/>	60
AE targety:	<input type="range"/>	64
<input checked="" type="checkbox"/> Flip <input checked="" type="checkbox"/> Mirror		
<input type="checkbox"/> WDR		
Aemode:	Auto	
Imgmode:	Illuminance	
IR LED Control:	Auto	
IR Cut:	750 (1-1024, the late value, the greater the switching time)	
<input type="button" value="Apply"/> <input type="button" value="Cancel"/> <input type="button" value="Default"/>		

- Device information
- Time set
- Video settings
- Audio Settings
- Record Settings
- Alarm Service Settings
- Email
- FTP
- System Log
- Network Settings
- Wireless
- DDNS Settings
- PTZ set
- Multiple settings
- User Settings
- Maintain
- ONVIF
- Motion detection
- Auto Snap
- Video mask
- Image**
- Back

FAQ:

A. Password forgotten

- 1) Reset your camera. While the power is on, you must press the RESET button for 10 seconds. The button you will find at the bottom of the camera. With outdoor cameras the white reset button is located at the end of the power cord.
- 2) After the reset is completed, the camera is reset to the factory settings, then the username and the password is "admin".

B. No video, only a black screen, is displayed in the browser



Note: If there is still no live video after running OCX ActiveX, please try to enable the ActiveX options in the IE security settings by performing the following steps:

1. Deactivate the firewall of your computer.

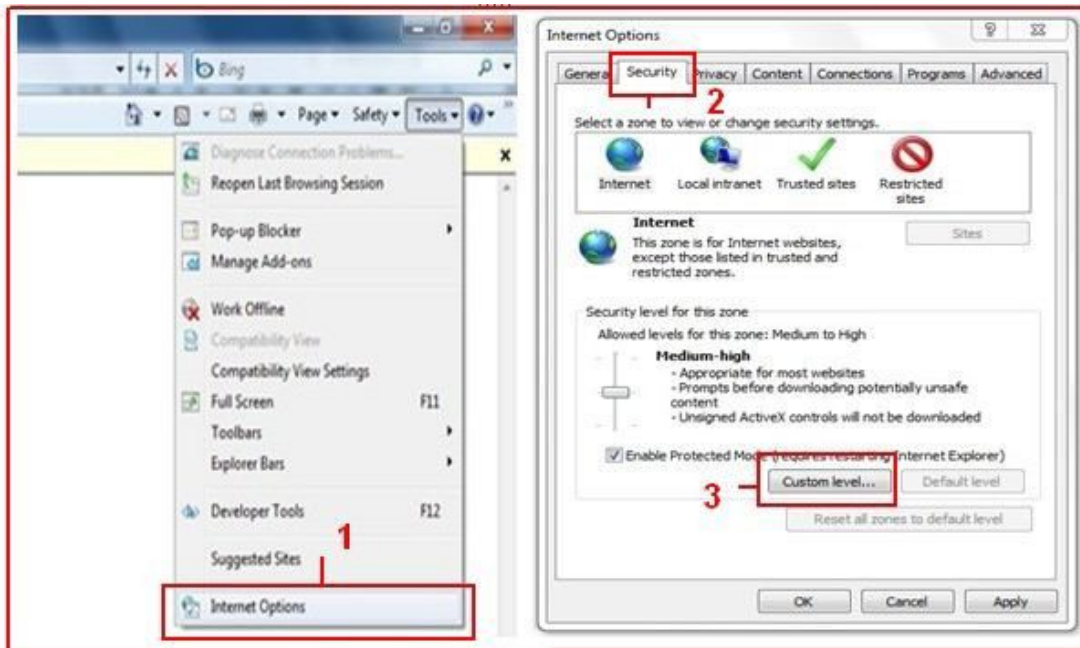
2. Change the ActiveX settings in "IE" browser > "Tool" > "Internet Options" > "Security" > "Custom Level" > "ActiveX control and Plug-ins", all ActiveX options should be configured as "Enable":

Especially:

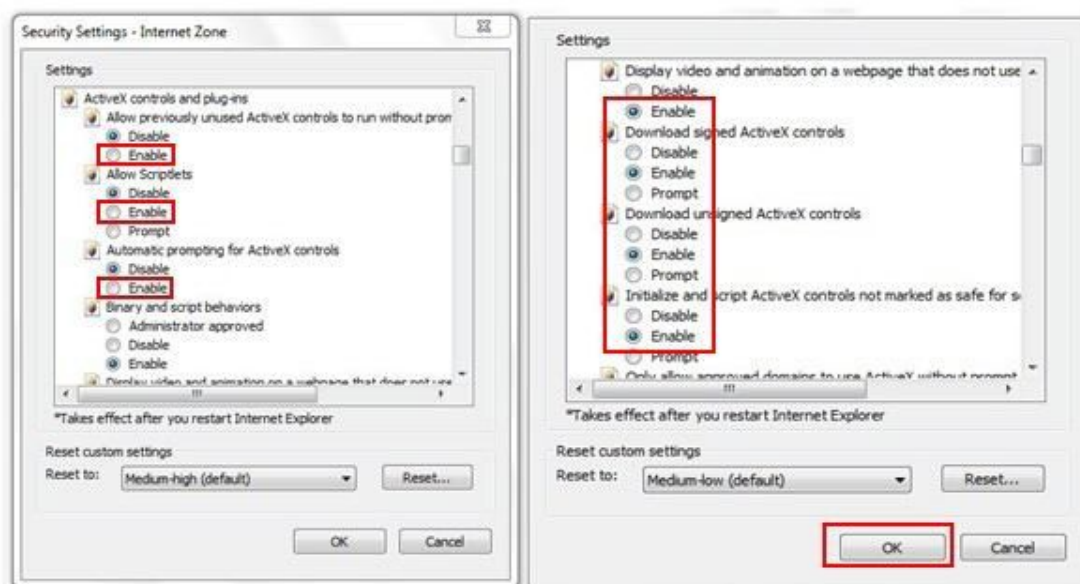
Enable: Download unsigned ActiveX controls

Enable: Initialize and script ActiveX controls not marked as safe

Enable: Run ActiveX controls and plug-ins



a.



b.